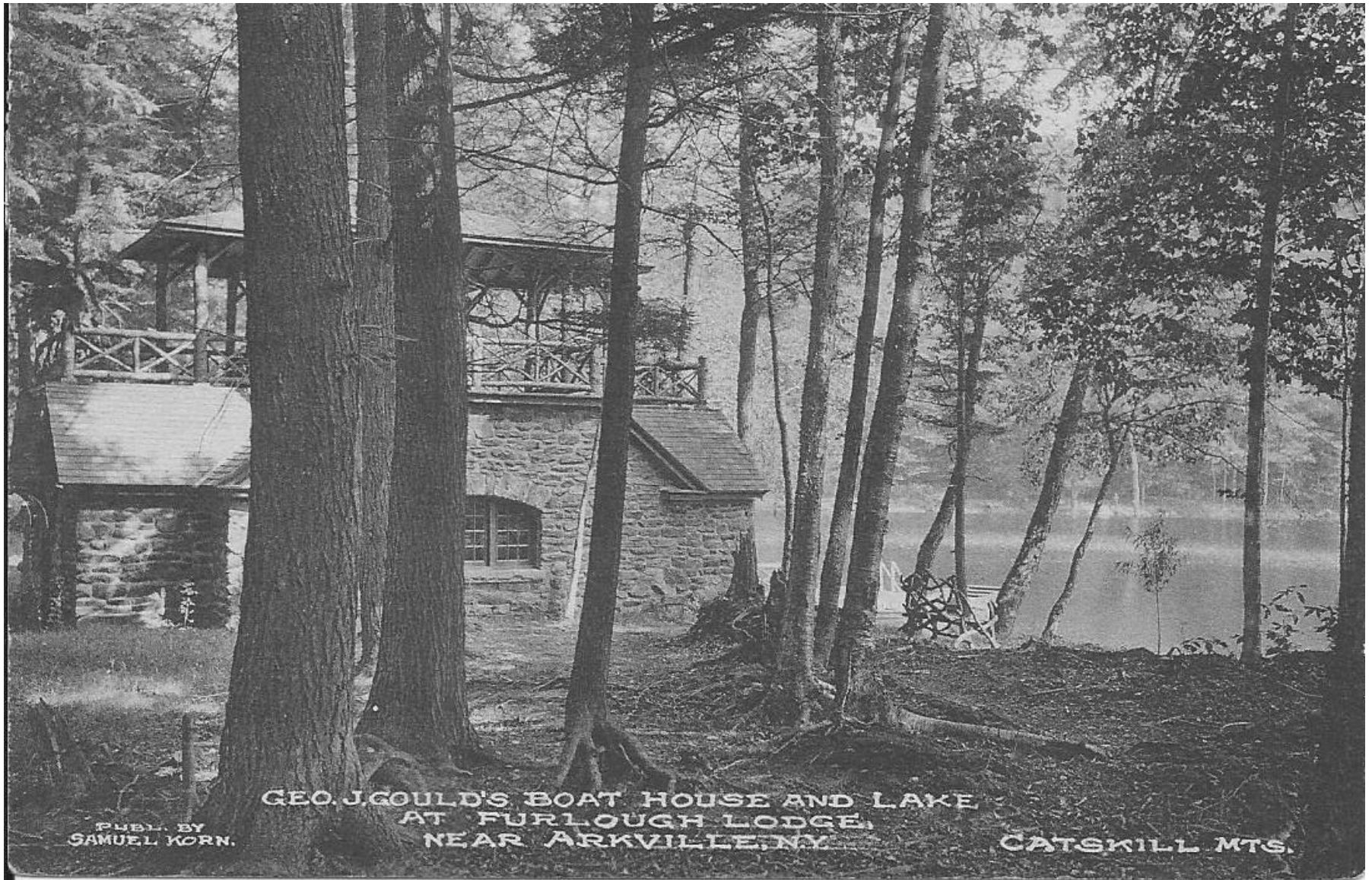


Geo. J. Gould's Boat House and Lake at Furlough Lodge



PUBL. BY
SAMUEL KORN.

GEO. J. GOULD'S BOAT HOUSE AND LAKE
AT FURLOUGH LODGE,
NEAR ARKVILLE, N.Y.

CATSKILL MTS.

George J. Gould's Garage “Furlough Lodge”



George J. Gould's Garage at "Furlough Lodge",
near ARKVILLE, Catskill Mountains, N. Y.

Furlough Mountain View

Furlough Mountain View
Arkville, Catskill Mountains, N. Y.

PUBLISHED BY SAMUEL KORN,
ARKVILLE, CATSKILL MOUNTAINS, N.Y.



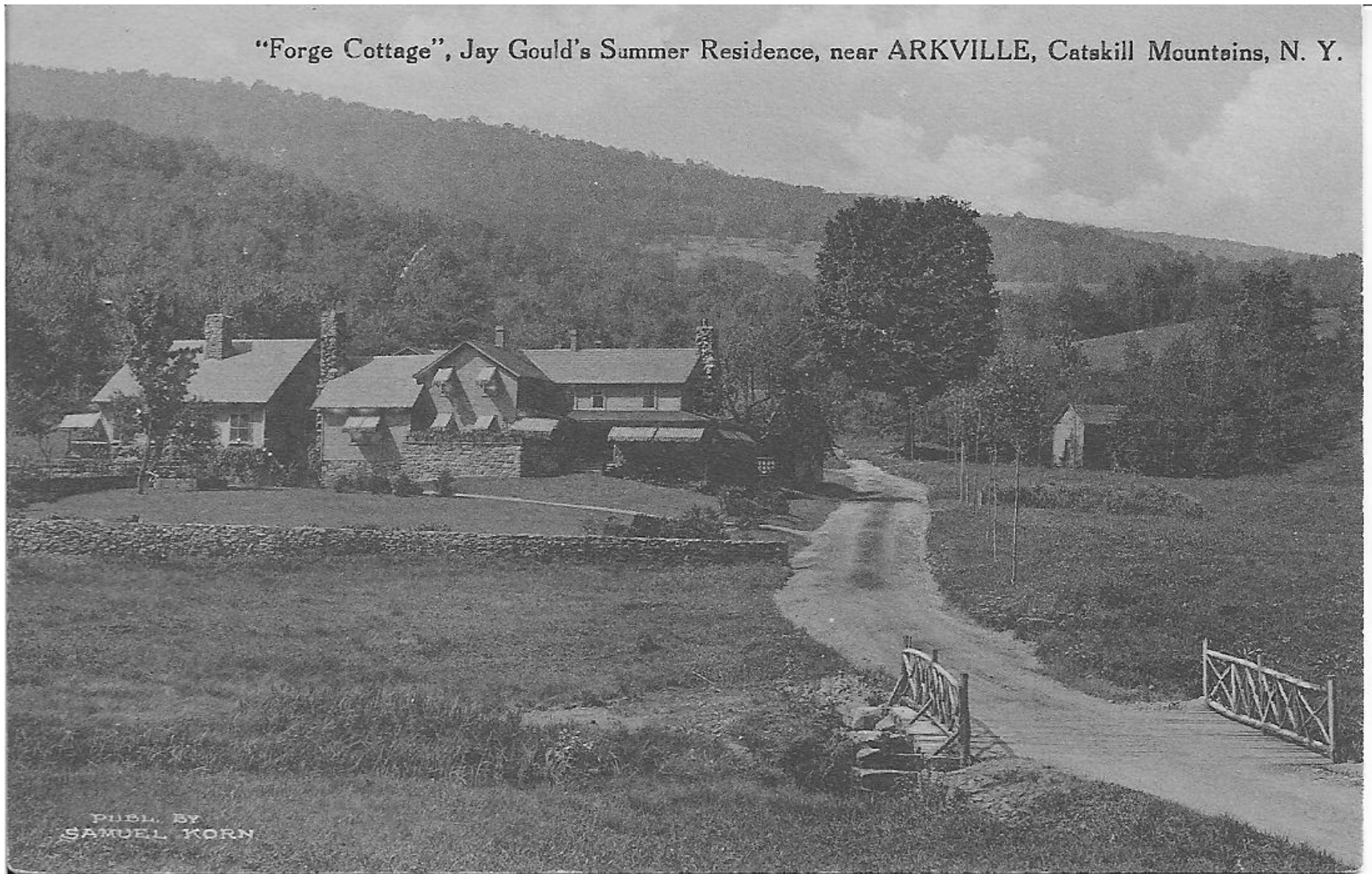
Ice House, "Furlough Lodge"

Now houses handball court; caretaker's house at rear



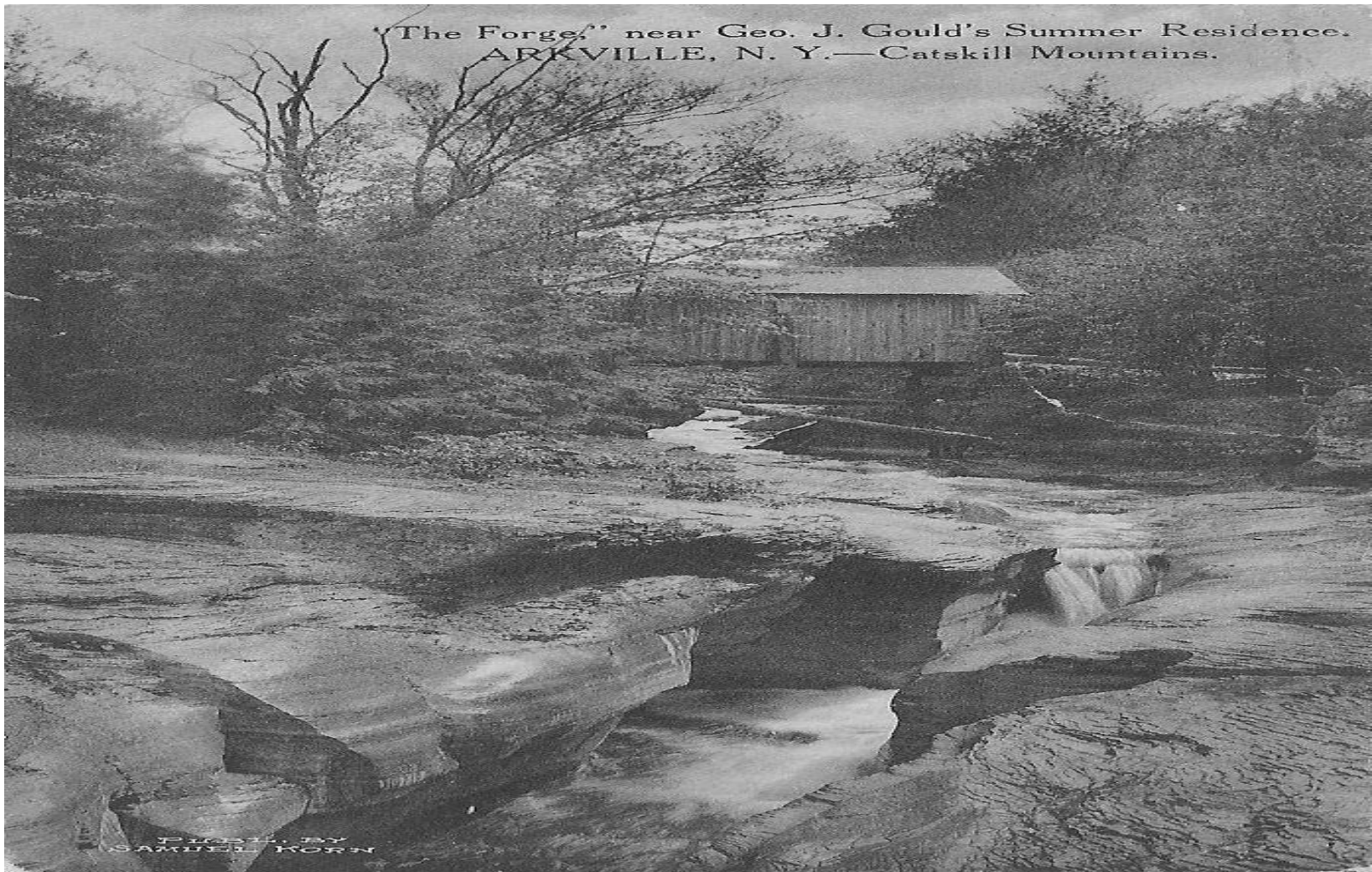
“Forge Cottage”

Jay Gould's Summer Residence



“The Forge” near George J. Gould's Summer Residence – August 3, 1910

During 1950 flood the water wheel of the
forge was unburied



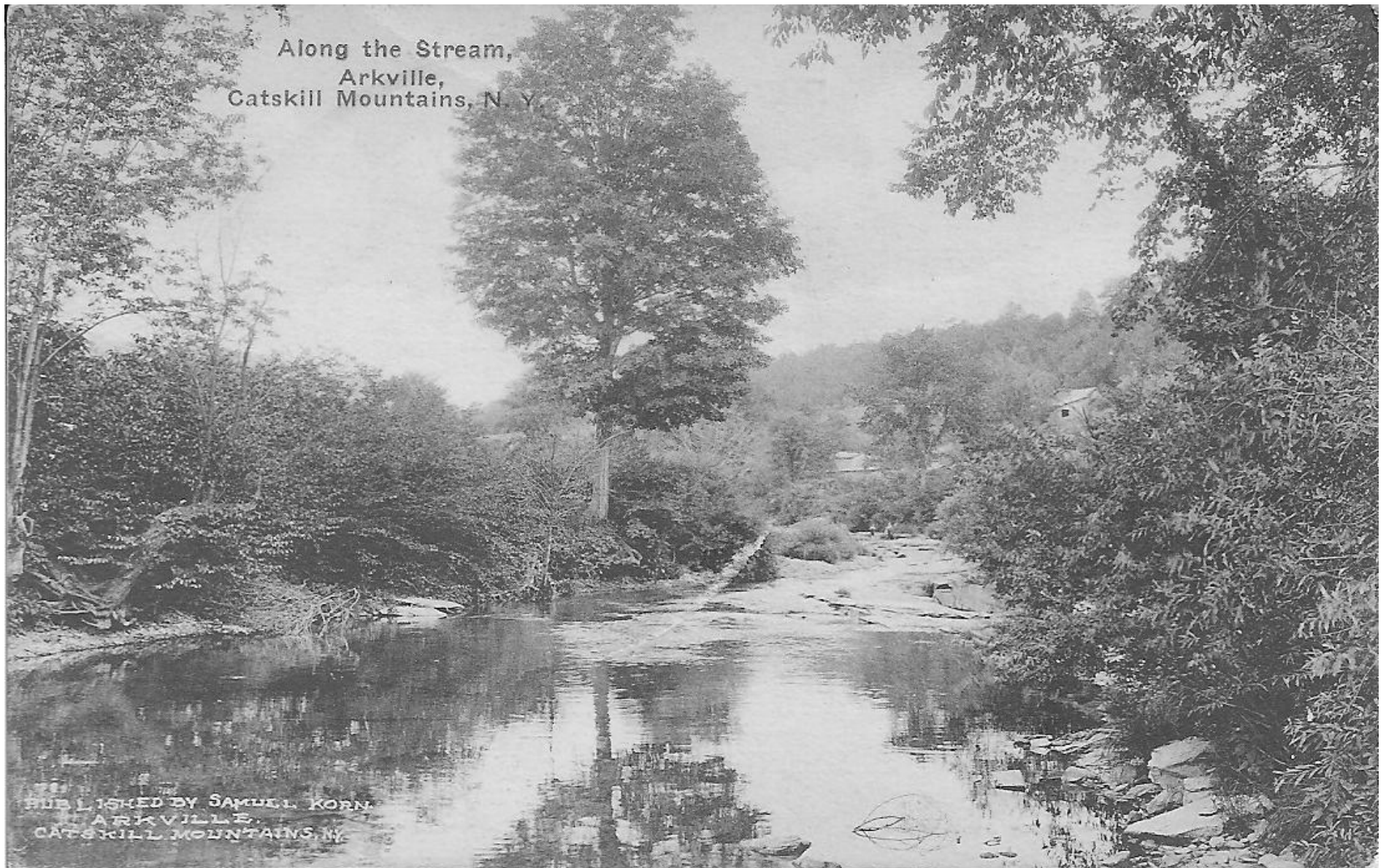
The Falls near Pakatakan



THE FALLS NEAR THE "PAKATAKAN"
CATSKILL MOUNTAINS,
ARKVILLE, N.Y.

PUBLISHED BY SAMUEL KORN
ARKVILLE,
CATSKILL MOUNTAINS, N.Y.

Along the Stream, July 11, 1926



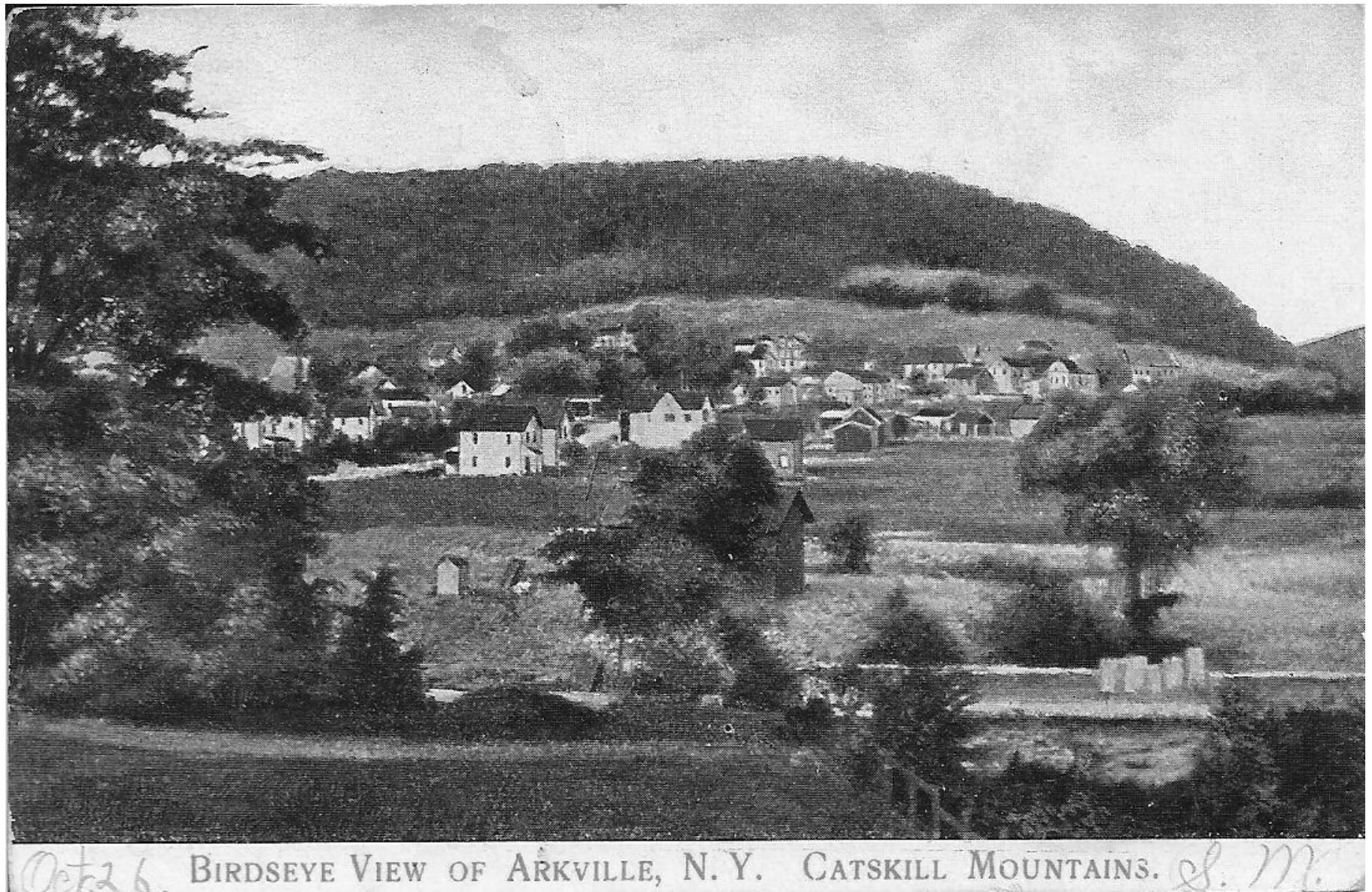
Greetings from Arkville, NY

GREETINGS FROM ARKVILLE, N. Y.



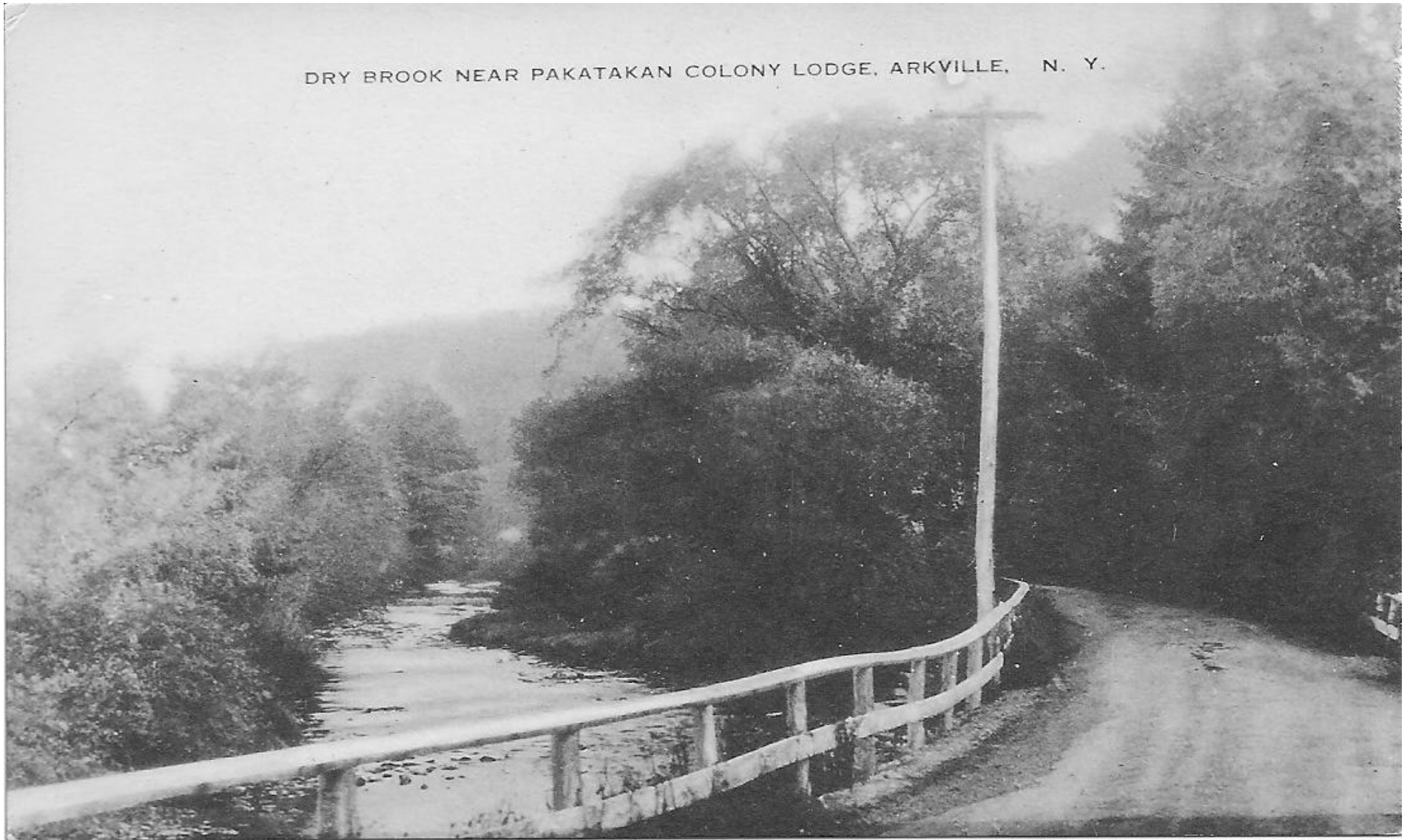
Birdseye View of Arkville

October 26, 1907

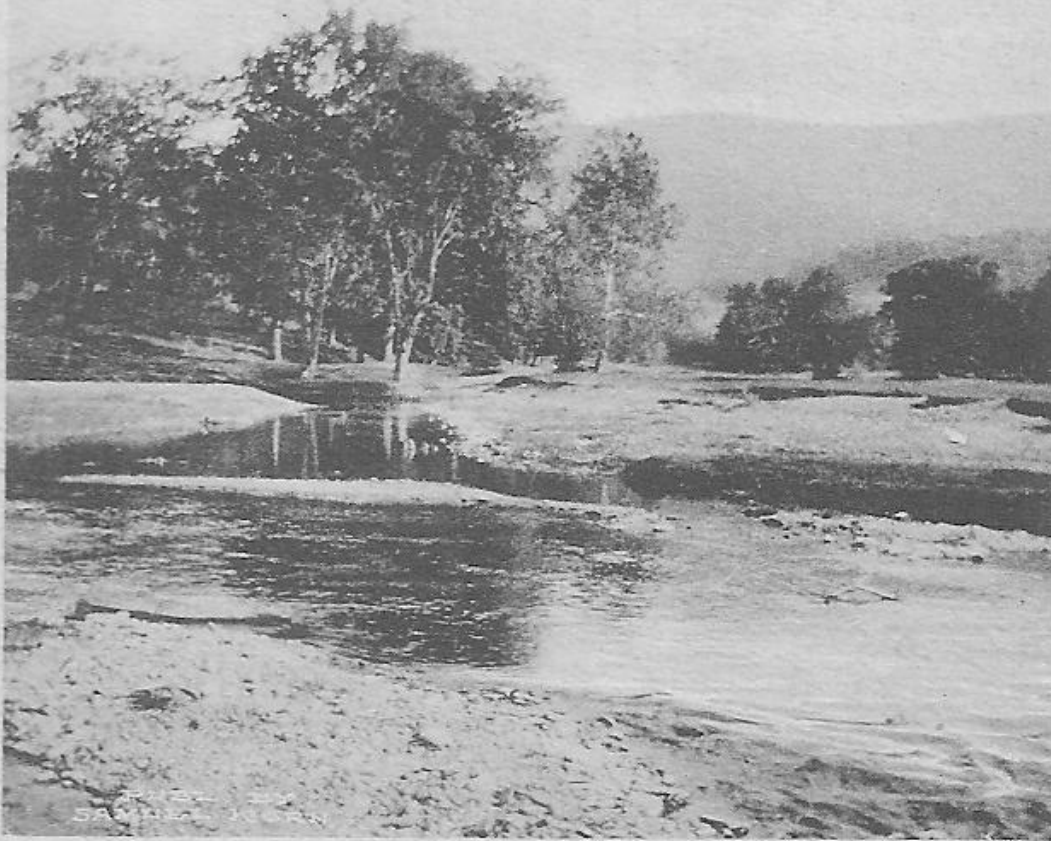


Oct 26. BIRDSEYE VIEW OF ARKVILLE, N. Y. CATSKILL MOUNTAINS. S. M.

The Brook near The Pakatakan Colony Lodge August 27, 1946



Along the Stream



Pahatahan

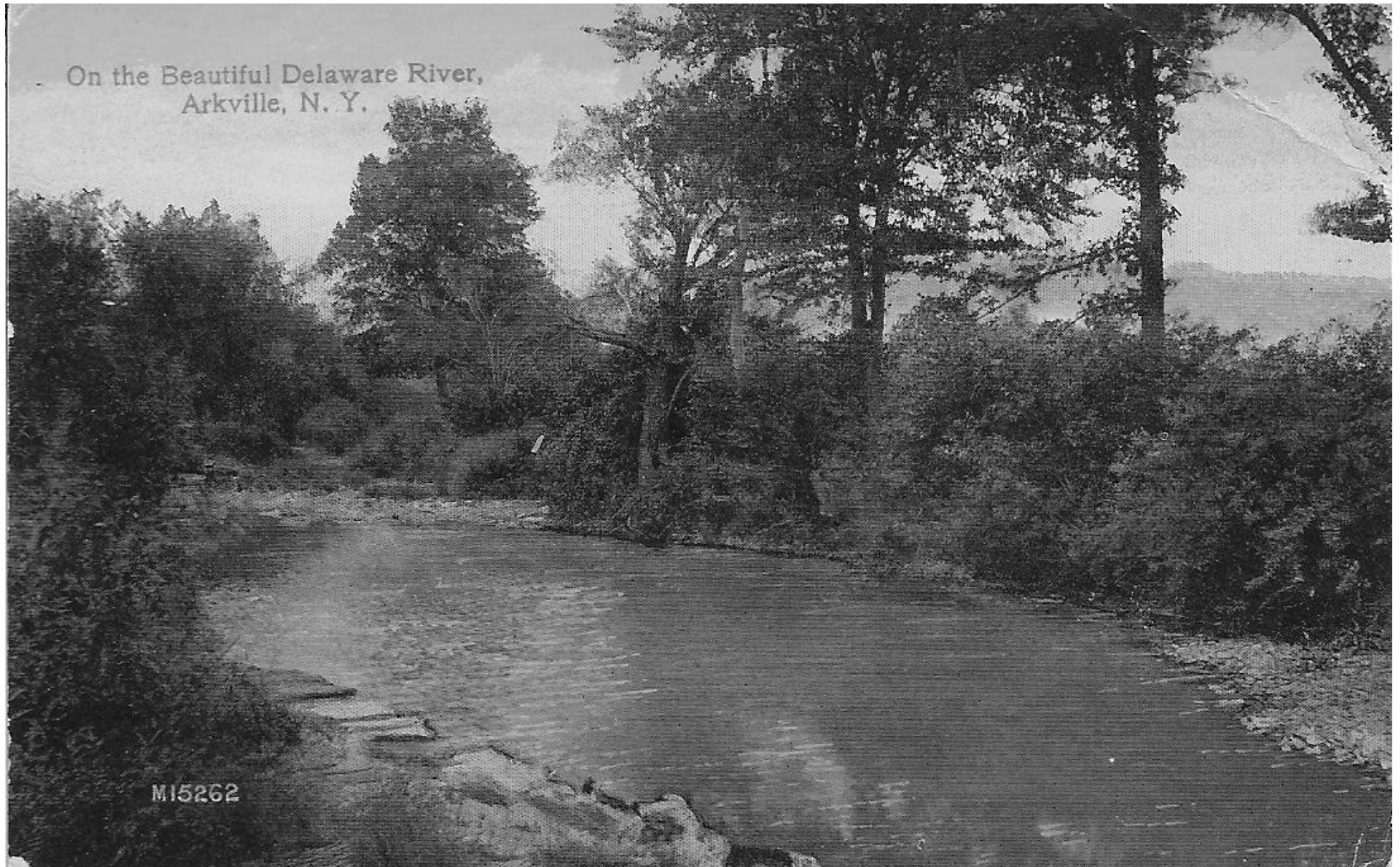
ALONG THE STREAM.

ARKVILLE, Delaware Co.
CATSKILL MOUNTAINS, N. Y.

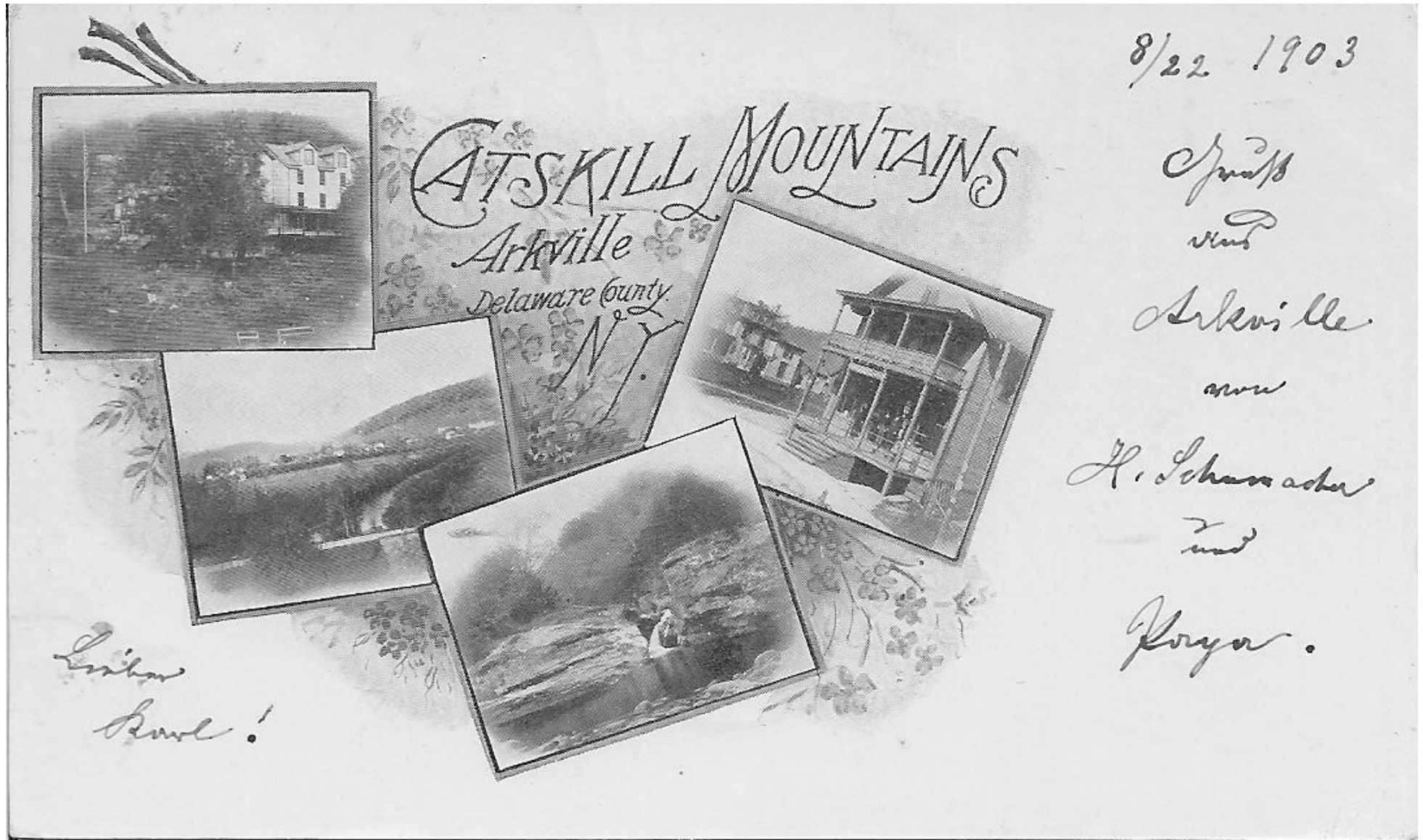
Dear Jessie -

*Received your
postal, many
thanks. Am
so glad
you are seeing
so much of
our beautiful
country. Love*

On the Beautiful Delaware River



Views of Arkville, August 22, 1903



Scene along the Delaware River showing U&D RR & State Hwy



SCENE ALONG THE DELAWARE RIVER SHOWING U. & D. RY. AND STATE HIGHWAY, CATSKILL MTS., N. Y.



My Christmas
Wish
On a Holly Card
"I wish you were
here"
And I wish it hard

Christmas
Greetings

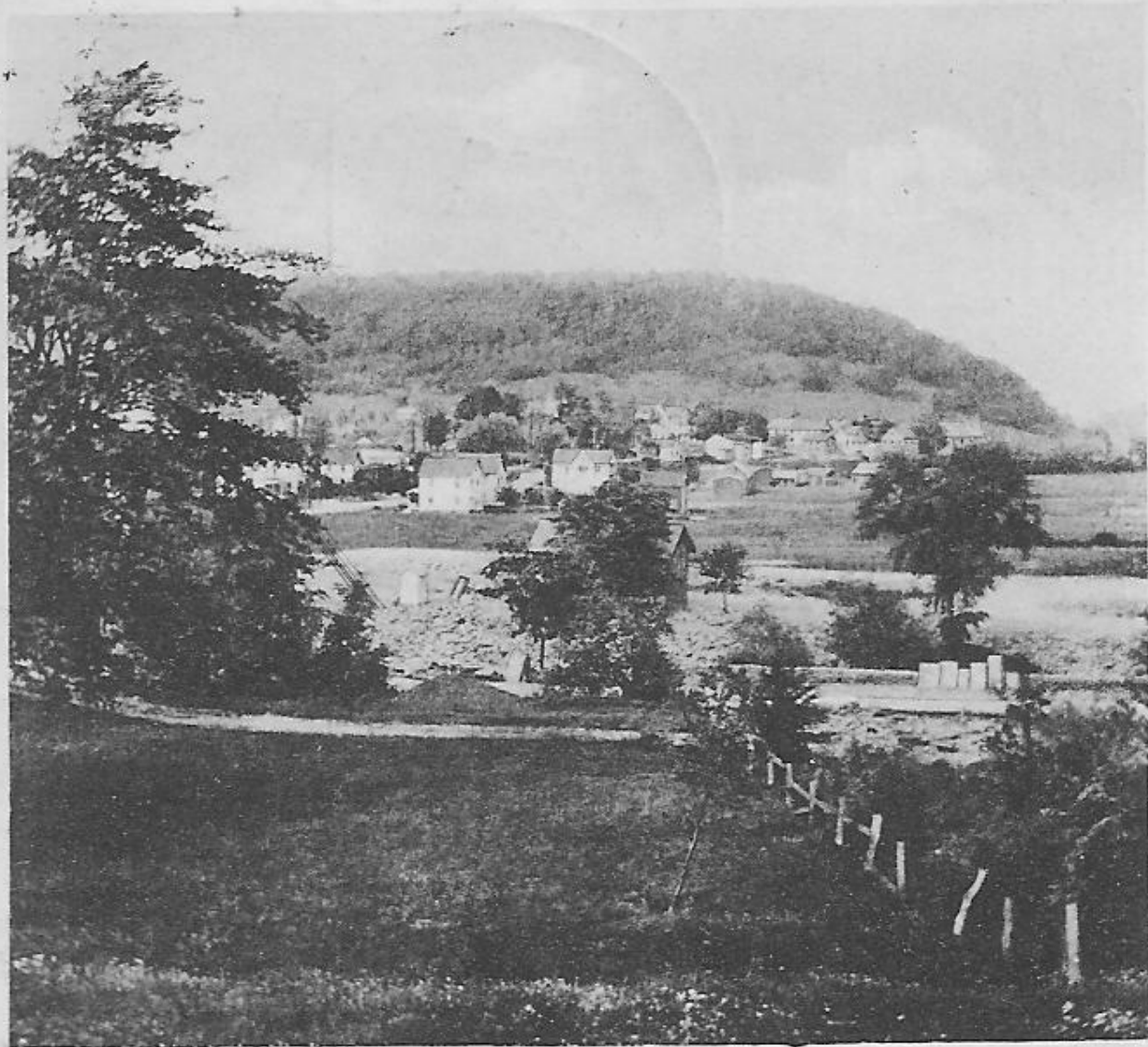
FROM

ARKVILLE, N. Y.

Scene Near Arkville



SCENE NEAR ARKVILLE, N. Y.



Birdseye view of Arkville, N. Y.

Aug 18 1905
Dear Mother

I will not
be home
untill Monday
L

January 9, 1914

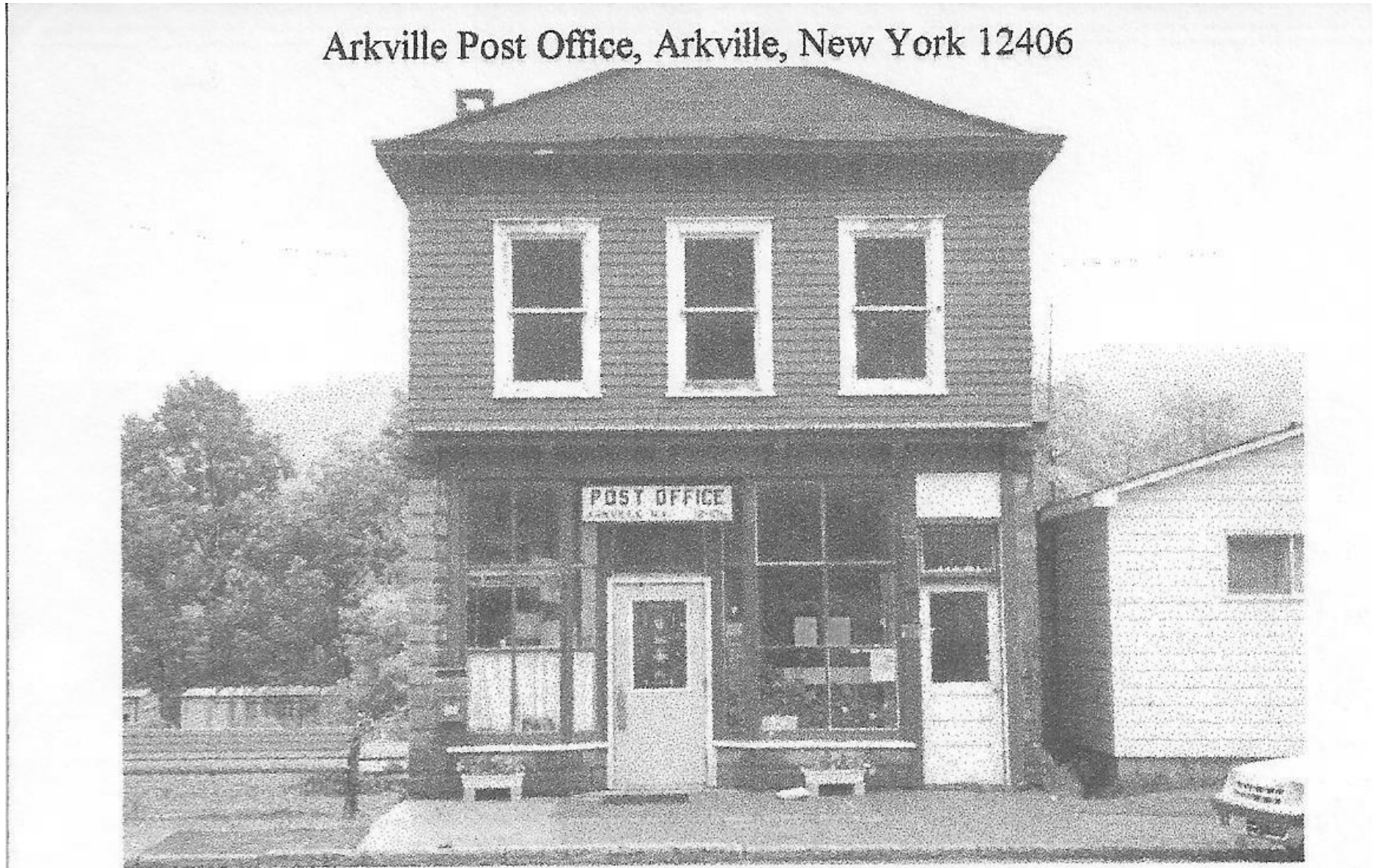


GENERAL VIEW.
ARKVILLE, N.Y.

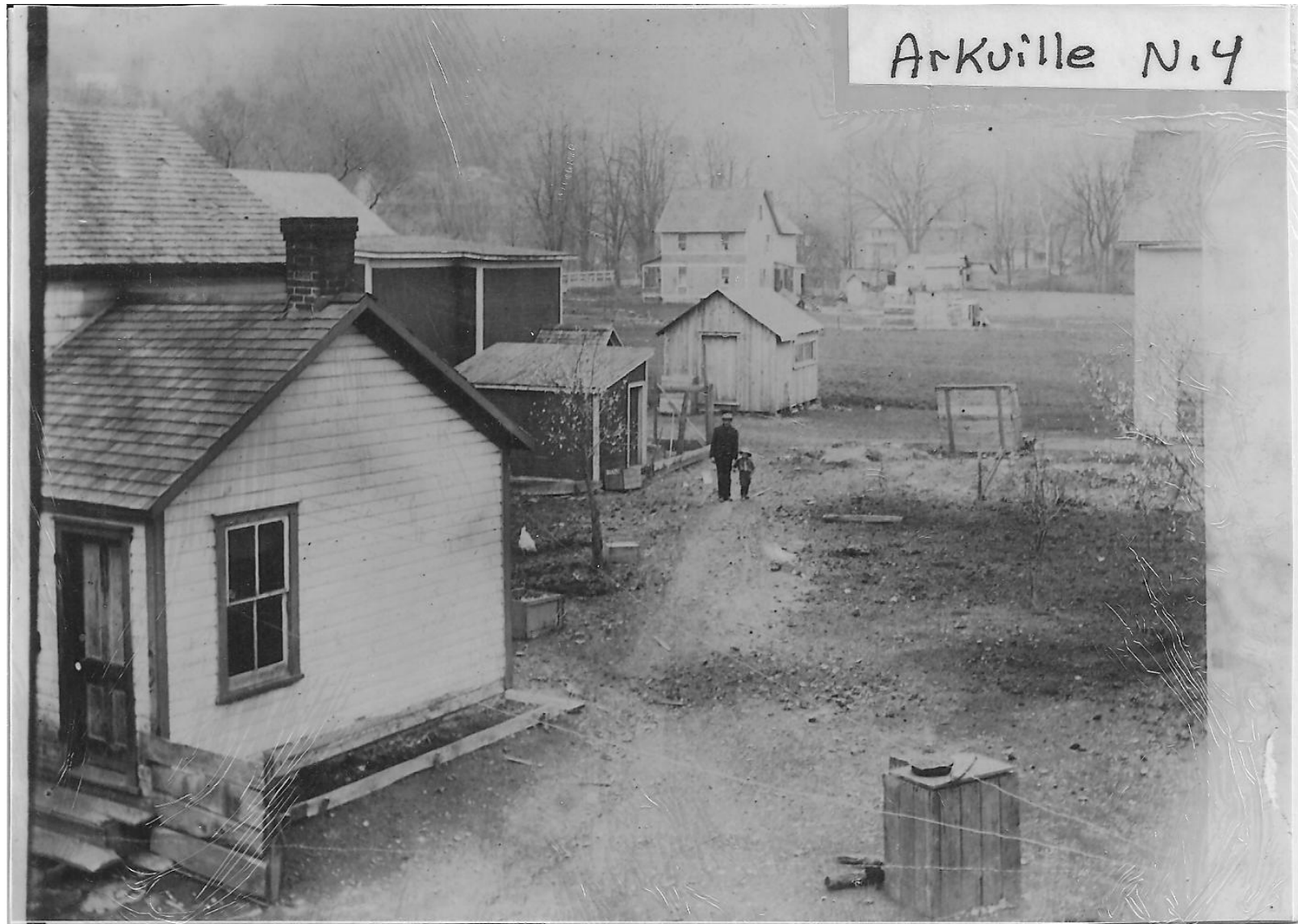
1155.

Arkville Post Office

Site of the Mead's Meat Market until original post office
burned in 1939



Byron Hanley Barn next to person in picture location uncertain



Hasbrouck & Evelyn Cole's Store & Gas Station

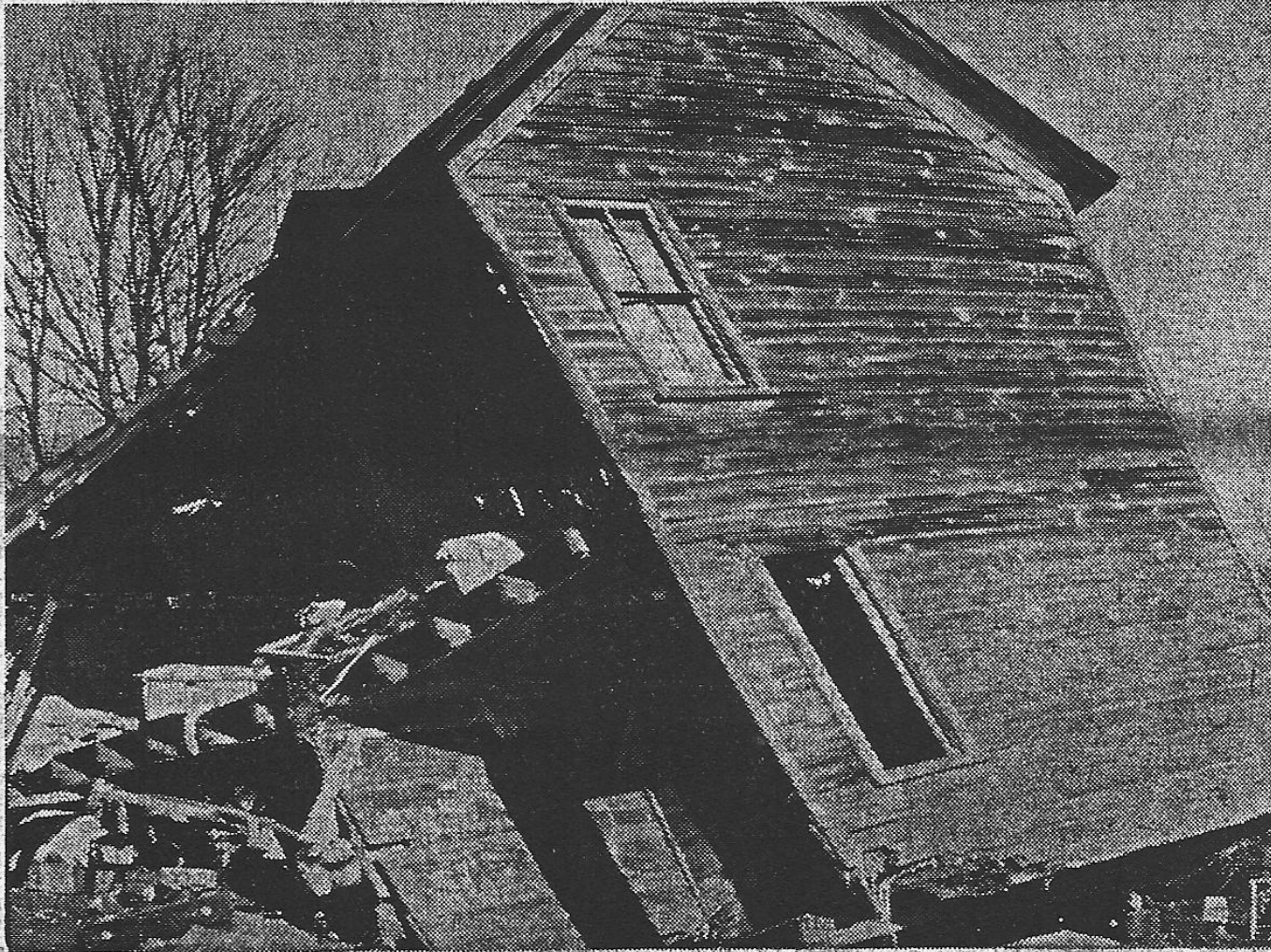
Taken down in 1950 for Route 28



Photo courtesy Dawn Cole Conklin
HASBROUCK AND EVELYN COLE ran this store and gas station opposite the Arkville cut-off road. It was taken down in 1950 when Route 28 was rebuilt.

Ed O'Brien's after 1950 Flood

Flood-Wrecked Houses and Pocked-Marked Mountain Landscape Are Scene of Area's Worst Flood



Home of Mr. and Mrs. Eddie O'Brien, Arkville, was completely wrecked. The O'Briens, who have three children, lost everything. The flood left the remains of the house at a precariously slanting angle.

December 1, 1950 Flood

Current Maine Black Bear at right



Ricci's

Demolished 1985



Mike Cerquozzi Len & Ray's Body Shop



May 30, 1997

Top, Nedra & Bob Griffin residence, relocated next to
Arkville bridge.

Bottom – Jewelry Store, Clothing Store
Motor Vehicle Office , 1st Jehovah Witness

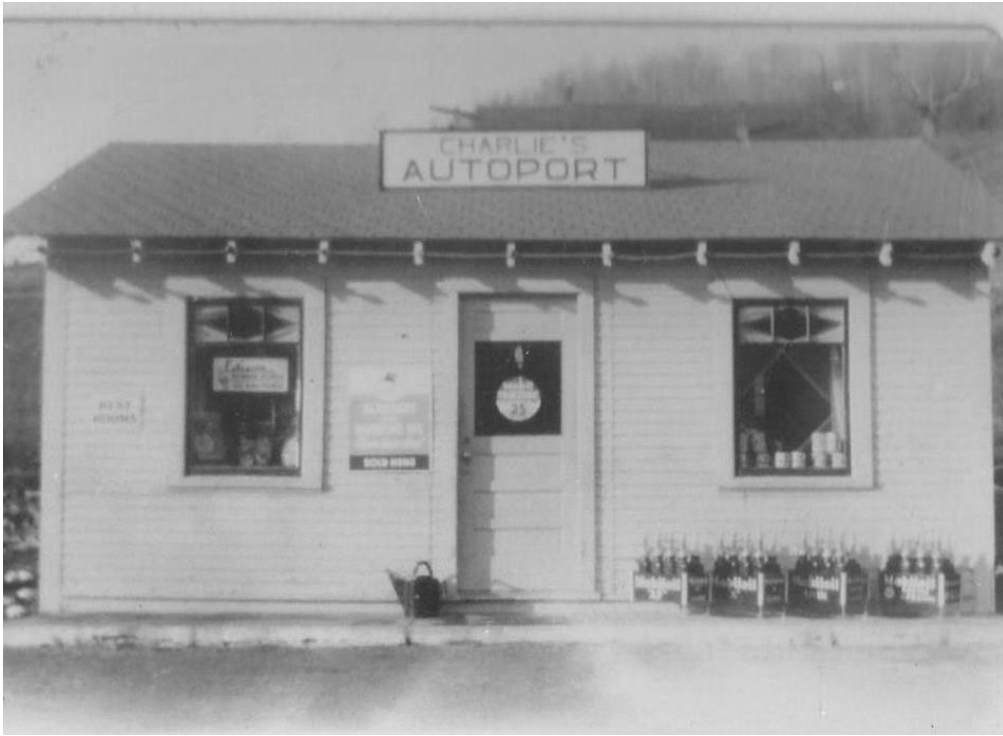


Tom Hills – Davis Inn- Frankie's
McDaniels – Now Oakleys
Rte 28 just east of hamlet

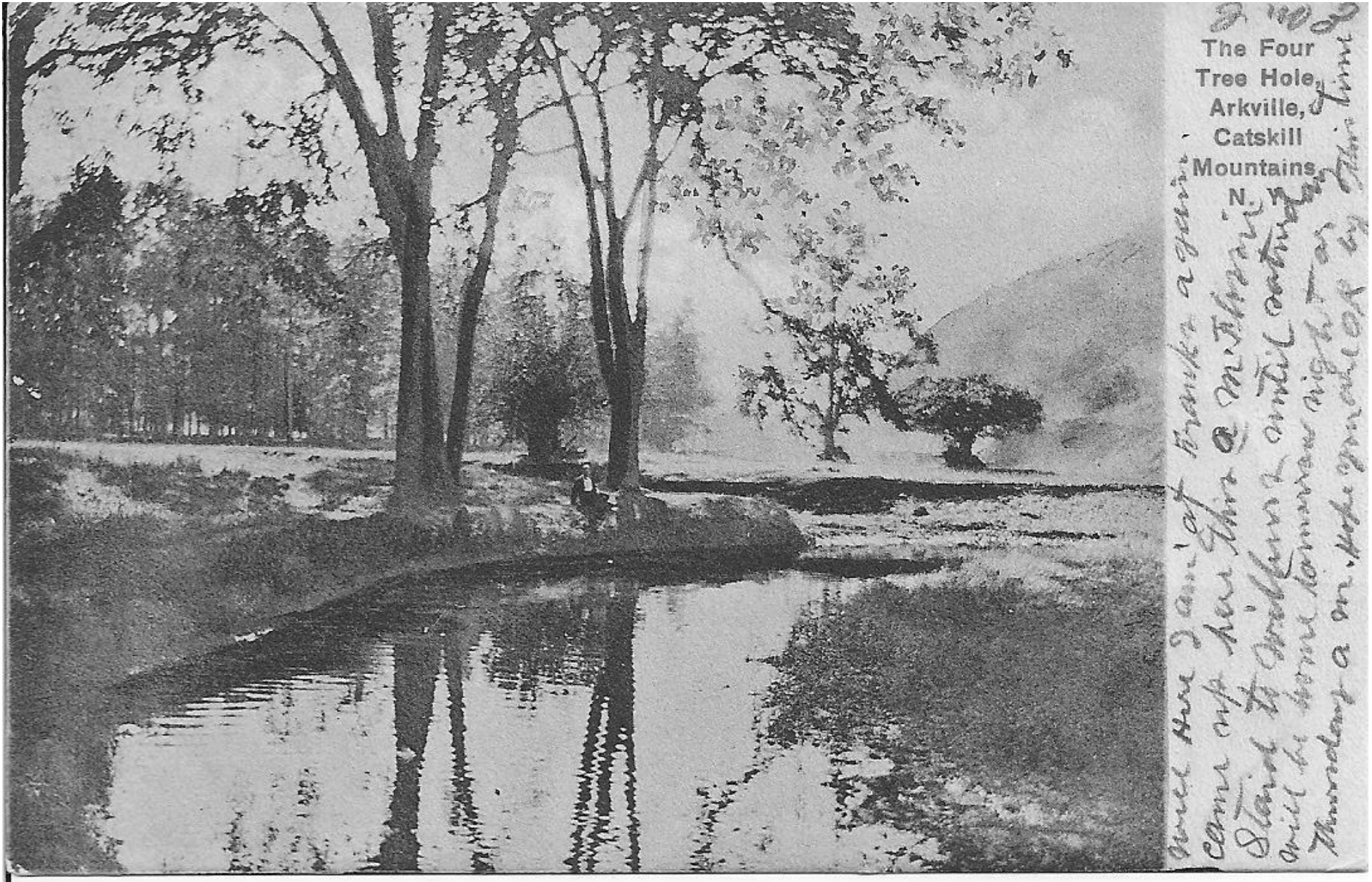


Then & Now

Charlie's Autoport - Country Store



The Four Tree Hole, Mar. 11, 1908



Car in front of John & Bertha Roberts House



On The Road To Roxbury

